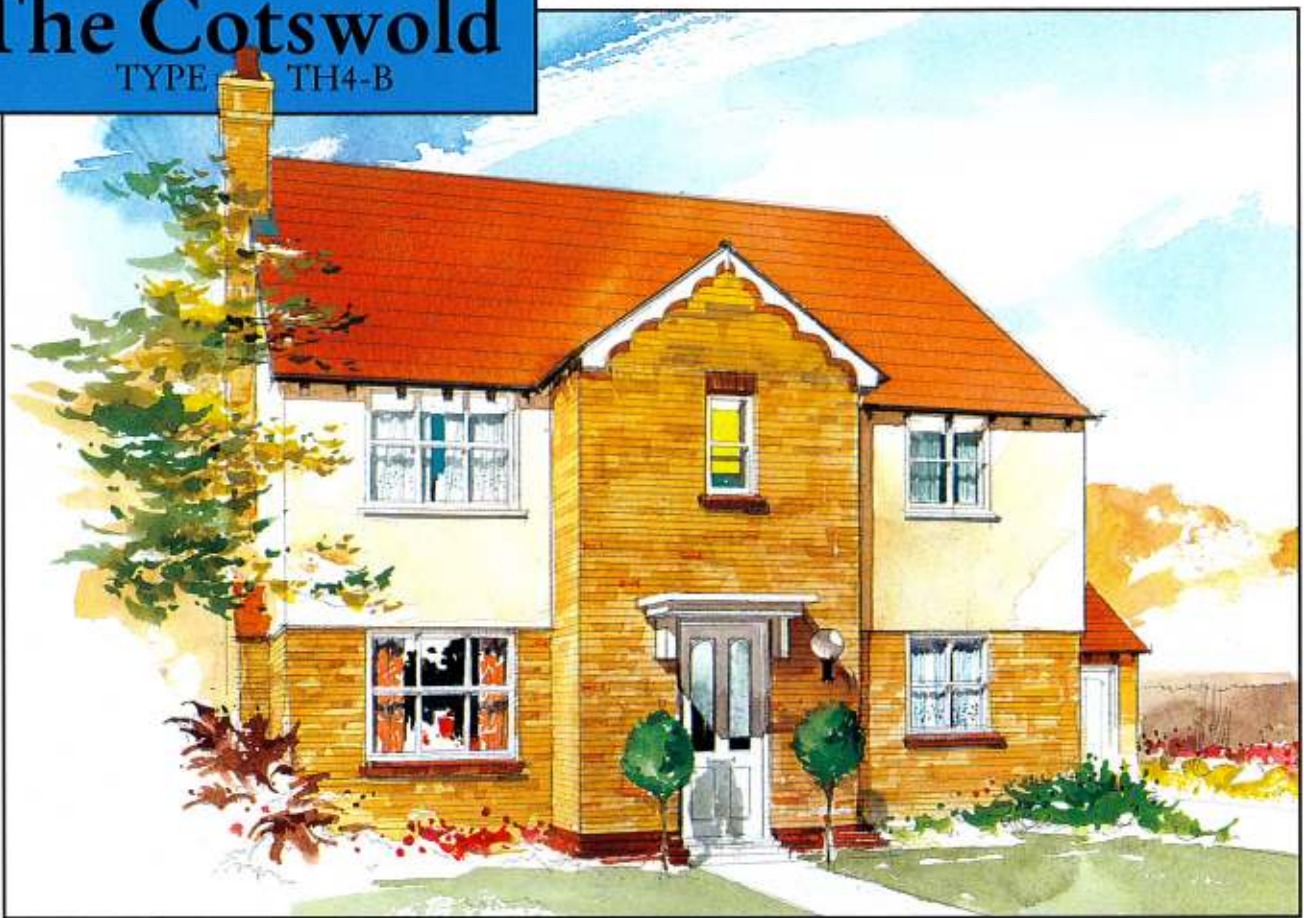
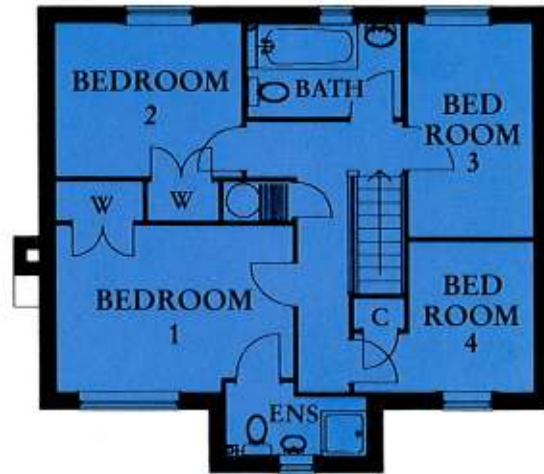
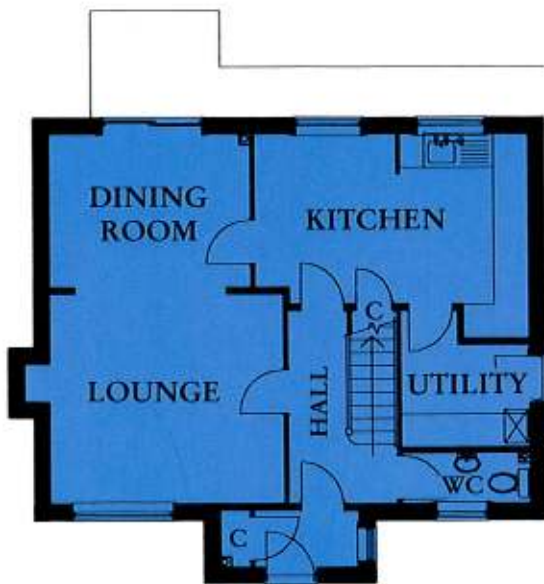


The Cotswold

TYPE TH4-B



Four bedroom detached house with attached or detached garage



GROUND FLOOR

Lounge	13'5" x 12'0"	4100mm x 3650mm
Dining Room	11'6" x 8'10"	3500mm x 2700mm
Kitchen	15'9" x 11'6"	4800mm x 3500mm max.
Utility Room	7'11" x 7'3"	2400mm x 2200mm max.

FIRST FLOOR

Bedroom 1	13'6" x 9'6"	4100mm x 2900mm	(with ensuite shower)
Bedroom 2	10'10" x 8'10"	3300mm x 2700mm	
Bedroom 3	12'2" x 7'3"	3700mm x 2200mm	
Bedroom 4	10'6" x 8'6"	3200mm x 2600mm max.	
Bathroom	8'10" x 5'7"	2700mm x 1700mm	

These particulars are prepared for the guidance of purchasers, the contents do not form part of or constitute a representative warranty or part of any contract. We reserve the right to make alterations.

